

## CONTAINER TILTERS SERIES

### Removal Materials



## Technical Specifications

Container Tilters allow you to tilt containers to their corners or side for easy product removal. Our tilter units work on as little as 40 PSI, and have been designed to load at floor level or low profile. Keeping safety in mind, a patented safety locking system is also available. Also, by activating the hand button, the regulator will automatically tilt at a predetermined weight. For materials that will not flow freely.

### Features

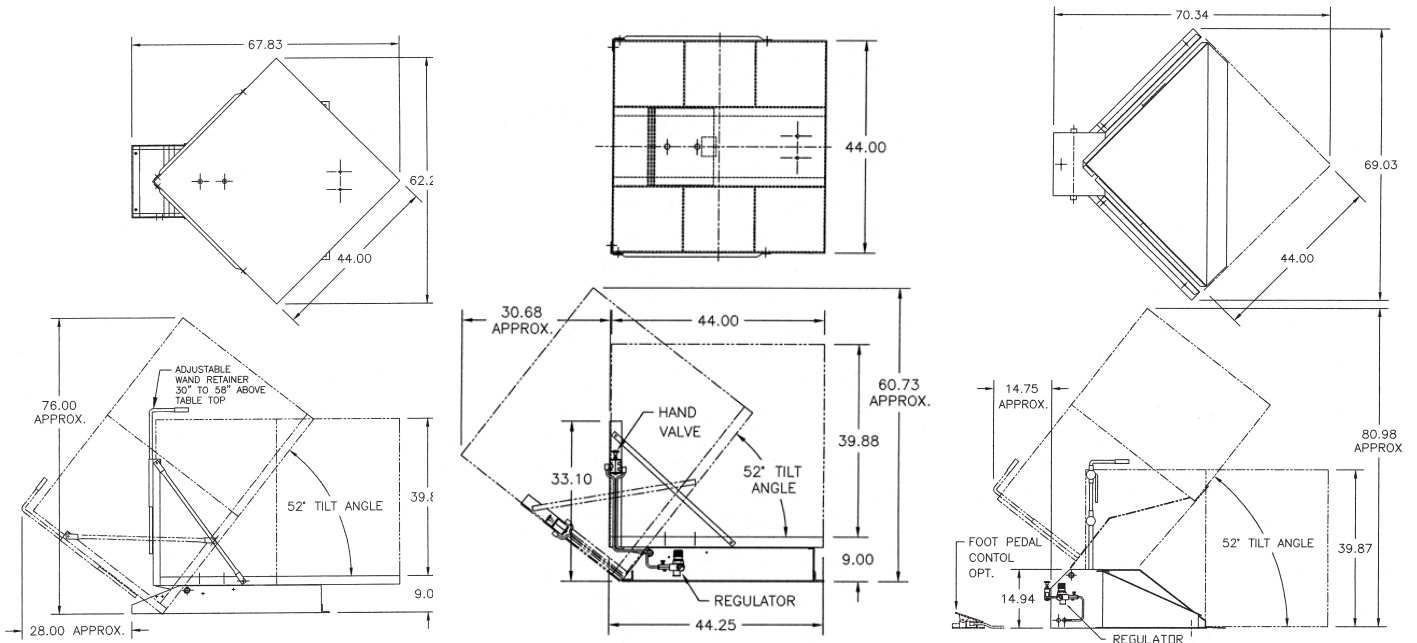
#### Standard Features

- Foot Control Valves
- Hand Control Valves
- Pneumatic Activation
- Corner Tilt
- Side Tilt
- Safety Tilt Stop
- Adjustable Vacuum Wand Holder

#### Optional Features

- Available in Various Materials of Construction
- Increased Tilt Capacity
- Adaption to Oversize Containers
- Vibrator package
- Safety locking device (low profile; floor level)
- Full Tilt Indicator Light
- Gaylord Cover
- Casters
- Automatic Tilt

## Product Diagrams



## Specifications

Type	Tilt	Description	Load Capacity, lbs.	Tilt capacity, lbs.	Dimensions, in.	Footprint, in.
Low profile	corner	Hand control, automatic tilt	2500	1500	44 x 44	48 x 30
		Foot control, automatic tilt				
Floor level	corner	Hand control, automatic tilt	2000	1500	44 x 44	71 x 52
		Foot control, automatic tilt				
Low profile	side	Hand control, automatic tilt	2000	1250	44 x 44	41 x 41
		Foot control, automatic tilt			44 x 56	