

ACCUMETER™ PRESTIGE

Loss-In-Weight Blender



Technical Specifications

The AccuMeter™ Prestige is one of the most versatile gravimetric blending systems with its ability to feed from 50 grams/hr to 16,500 lbs/hr and is able to accommodate up to 8 precision feeders per extruder and up to 16 feeders per controllers. All components are continuously dosed, and the material flow is constantly monitored and controlled. The system has a cumulative dosing accuracy of $\pm 0.5\%$ and is driven by variable speed motors. This system will improve overall product quality and reduce material usage caused by over-feeding, resulting in reduced product costs.

The AccuMeter™ Prestige features a modular, compact design that provides complete flexibility for changes in your process. Pellets, micro-pellets, powders and regrind are all accurately metered. Self-calibration eliminates the need to take manual weight samples or calibrations. Material changeovers are quick and easy - saving time, labor and money.

Features

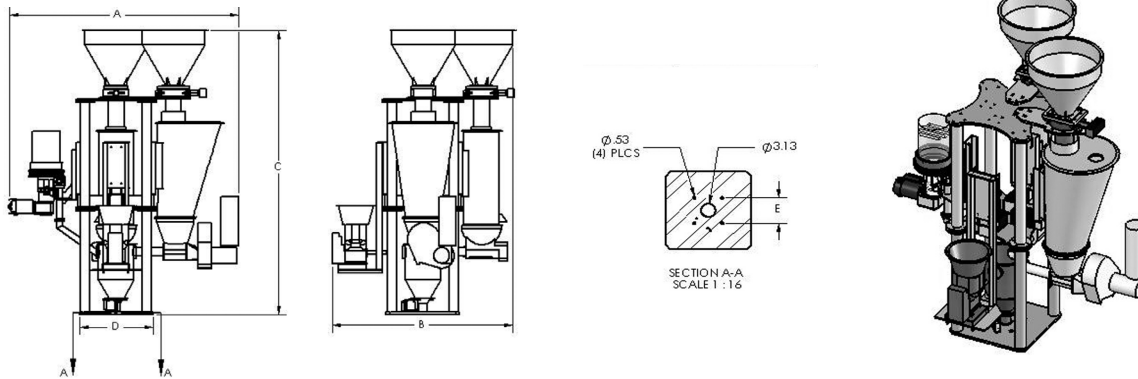
Standard Features

- Automatically adjusts individual feeders to match the extruder rate at the exact ratio required
- Upper material refill hoppers with refill valves
- Individual component weigh hoppers
- Mass flow weigh hopper assembly
- User-friendly color touch screen programmable controller
- PWM-DC or inverter duty AC motor (depending on model) provide precision metering with wider recipe ranges
- Precision 0.02% analog or 0.0001% digital load cells (depending on model) provide accurate weight information
- Feeder trending
- Full diagnostics
- Complete inventory and material usage information
- Alarm outputs
- 115/1/60, 230/1/60 or 460/3/60 supply voltage (varies by model), other voltages available

Optional Features

- Twin-screw feeders and special agitators are available for non free-flowing material
- Mezzanine mounting stand with 4" tube stub
- Low-level, proximity sensor for each supply hopper
- Supply hopper lids cut for non-Sterling vacuum receivers
- Agitated regrind supply and weigh hoppers for regrind material (per component)

Product Diagrams



Model	A in. (mm.)	B in. (mm.)	C in. (mm.)	D in. (mm.)	E in. (mm.)
4-component	56 (142)	46 (117)	72 (183)	18.5 (47)	6 sq. (15 sq.)
6-component	58 (147)	54 (137)	82 (208)	28 (71)	6 sq. (15 sq.)
8-component	70 (178)	66 (168)	88 (234)	28 (71)	6 sq. (15 sq.)

Specifications

General Blending	Max Output lbs. (kgs.)	Number of Components
AMP 500	500 (225)	2 to 8
AMP 1000	1,000 (450)	2 to 8
AMP 1500	2,500 (1,140)	2 to 8
AMP 5000	5,000 (2,280)	2 to 8
AMP 10000	10,000 (4,545)	2 to 8
AMP 15000	20,000 (6,800)	2 to 8

Fiber Applications	Max Output lbs. (kgs.)	Number of Components
AMF 500	500 (225)	2 to 8
AMF 1000	1,000 (450)	2 to 8
AMF 1500	2,500 (1,140)	2 to 8
AMF 5000	5,000 (2,280)	2 to 8
AMF 10000	10,000 (4,545)	2 to 8
AMF 15000	20,000 (6,800)	2 to 8

Compounding	Max Output lbs. (kgs.)	Number of Components
AMC 500	500 (225)	2 to 8
AMC 1000	1,000 (450)	2 to 8
AMC 1500	2,500 (1,140)	2 to 8
AMC 5000	5,000 (2,280)	2 to 8
AMC 10000	10,000 (4,545)	2 to 8
AMC 15000	20,000 (6,800)	2 to 8