



## MEDIUM DUTY SHREDDER

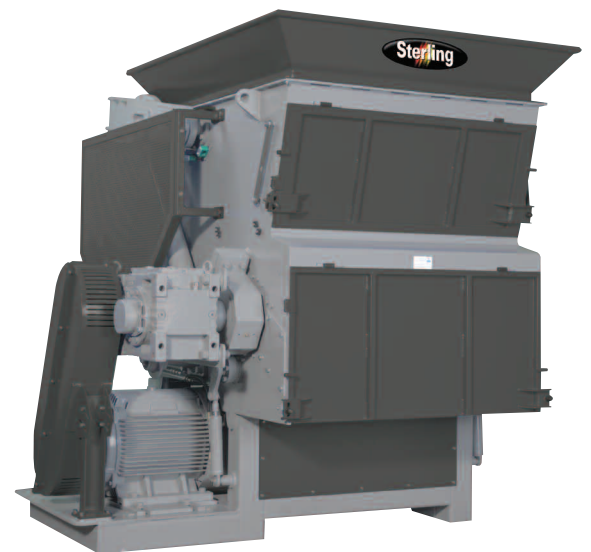
## POWER AND PERFORMANCE FOR TROUBLE-FREE SIZE REDUCTION

The SMS Series is designed for processing scrap from wood industries—miscellaneous trim and panel scraps, furniture, injection and extrusion mold startup purge, heavy wall parts, paper and cardboard, film (baled and loose).

It reduces material to approximately 1" to 4" based on screen sizes when combined with a Sterling/Ball & Jewell granulator (stacked 2 stage or in-line with conveyors) output material sizes can range from 1/8" to 1/2" and the granulator can average 150% of its stated throughputs without heavy power consumption loads typically seen when using a granulator alone.

### Features and Benefits

- 18" diameter (15" on the SMS 850 model) drum style rotor provides efficient cutting of various process scrap
- Low speed rotor (102 rpm) transmits high cutting torque for tough applications
- The low speed cutting action reduces noise levels
- Standard rotor is fabricated using abrasion resistant steel for long life in high wear applications
- 4 edge 1.3" (34mm) reversible cutters with bolt in replaceable knife seat for easy maintenance
- "Swing style" hydraulic ram along with the tangential cutting chamber design allows material to maintain contact with the rotor on both cycles of the ram
- "Swing style" ram enables reduced footprint
- Two speed 7.5hp (5hp on the 850) ram hydraulic system maximizes pressure while shredding that changes to high speed while not contacting material
- Heavy duty self aligning outboard mounted bearings that reduce the possibility of material contamination
- Multiple doors for easy access during cleaning and maintenance





Model	Specifications			
	850	1200	1500	2000
Hopper Feed Opening, in. (mm)	33.1 x 52.8 (840 x 1340)	44.1 x 61.8 (1120 x 1570)	55.1 x 61.8 (1400 x 1570)	77.2 x 61.8 (1960 x 1570)
Usable Area of Cutting Chamber, in. (mm)	27.6 x 28.7 (700 x 730)	31.5 x 39.8 (800 x 1010)	31.5 x 50.8 (800 x 1290)	31.5 x 72.8 (800 x 1850)
Rotor Dia., in. (mm)	15.2 (387)	18 (457)	15 (457)	18 (457)
Rotor Speed (rpm)	102			
No. of D2 Rotor Cutters (34mm x 34mm)				
No. of D2 Bed Knives (4-edge)	6	8	10	14
Standard Motor, hp (KW)	50 (37)	75 (55)	100 (75)	2 x 75 (2 x 55)
Motor of Hydraulic Device, hp (kW)	5 (3.7)	7.5 (5.6)	7.5 (5.6)	7.5 (5.6)
Machine Weight, lbs (kg)	10,584 (4800)	14,333 (6500)	17,640 (8000)	20,948 (9500)



Large Diameter Rotor with "Swing Style" Ram with Serrated Front Surface



Standard hardened rotor with replaceable cutters and cutter holders designed for high throughput of the toughest materials



**Sterling New Berlin**  
 2900 S 160th Street  
 New Berlin, WI 53151 USA  
 Tel: +1 262 641 8610  
 Fax: +1 262 641 8653  
[www.sterlco.com](http://www.sterlco.com)

**Sterling Schaumburg**  
 1100 E Woodfield Rd #550  
 Schaumburg, IL 60173 USA  
 Tel: +1 847 273 7700  
 Fax: +1 847 273 7804

**Sterling India**  
 Gat No. 191/1, Sandbhor Complex,  
 Mhalunge, Chakan, Tal Khed,  
 Dist. Pune 410501, India  
 Tel: +91 21 35329112  
 Fax: +91 20 40147576

**Sterling Warsaw**  
 ul.Dziakowa 115  
 02-234 Warszawa  
 Tel: +48 22 390 9720  
 Fax: +48 22 390 9724

**Sterling Suzhou**  
 109 Xingpu Road SIP  
 Suzhou, China 215126  
 Tel: +86 512 8717 1919  
 Fax: +86 512 8717 1916

