



## SINGLE AND DOUBLE COMPARTMENT PUMP TANK ASSEMBLIES

### ADVANCED TECHNOLOGY FOR ENHANCED PERFORMANCE

The CT/CW Series, single and double compartment, pump tank assemblies are the most complete, best constructed available. Our pump tanks' standard sizes range from 140 to 6,285 gallons, with pump sizes from 1.5 to 75 hp. Flow rates can be adjusted on each pump tank, depending on the customer's needs. These tanks can be custom made with multiple reservoirs, pump decks and ports for expansion, to name a few.

Chilled water tanks feature insulation and a cover to prevent sweating. Tower water tanks feature a stainless steel strainer basket. Both share these features: centrifugal pumps; full sized suction; discharge check; and throttling valves; thermometer for temperature monitoring; and overflow and valved drain fittings.

#### Features

- Stainless steel strainer basket (on tower tanks)
- 1/4" stainless steel construction
- 1 1/2" valved drain
- 1" automatic make-up valve
- Thermometers
- Diamond plate pump deck
- Overflow
- Thickest plate material in the industry
- Complete engineering, manufacturing and installation support

#### Options

- Mild steel tank
- Second pump ledge
- Support legs
- Sight glass
- Discharge manifolds



# CT/CW SERIES



1-Well		2-Well		Capacity (gal)	2-Well	Maximum Pumps/ Ledge	Return Water and Overflow Connect. (in)	Thermo. Brackets and 1/2" Plugged Openings (qty)	Dimensions (in)			Weight (lbs)	
Model Number	Capacity (tons)	Model Number	Capacity (tons)	Overflow	Operating				L	W	H	Shipping	Operating
CT/CW140	30	CT/CW140D	15	135	100	3	3	3	72	36	40	600	1,800
CT/CW480	100	CT/CW480D	50	480	360	3	4	3	102	48	52	2,000	6,000
CT/CW720	150	CT/CW720D	75	720	540	4	4	6	114	72	52	2,600	8,400
CT/CW1080	230	CT/CW1080D	115	1,075	825	4	6	6	114	72	77	3,400	12,400
CT/CW1620	340	CT/CW1620D	170	1,615	1,240	4	6	6	138	72	77	4,000	17,500
CT/CW2040	430	CT/CW2040D	215	2,040	1,565	5	6	6	150	92	78	5,000	22,100
CT/CW2700	570	CT/CW2700D	285	2,700	2,065	6	6	6	150	120	78	6,000	28,500
CT/CW3670	780	CT/CW3670D	390	3,665	2,830	6	6	6	162	120	90	7,000	37,600
CT/CW5130	1,100	CT/CW5130D	550	5,130	3,960	7	8	6	162	168	92	7,800	50,700

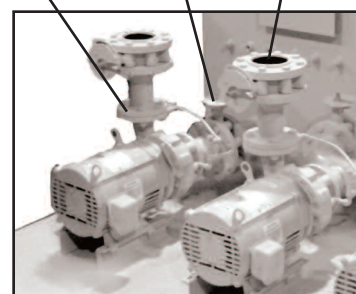
Pump Horsepower	1 1/2	3	5	7 1/2	10	15	20	25	30	40	50	60
Amp Draw 460/3/60	2	3	7	10	13	18	25	30	35	49	60	72
Shipping Weight (lbs) - P1	-	95	115	125	165	180	300	310	400	465	710	730
Shipping Weight (lbs) - P2	60	90	115	275	320	425	510	630	670	-	-	-
Trim Size (in)	2		2 1/2		3		4		6		8	
Maximum Flow (gpm)	50		90		165		320		900		2,000	
Shipping Weight (lbs)	25		35		50		75		120		165	



## Optional NEMA Control Panel

- Individual running lights for each motor
- Off/auto selector switch for each pump motor
- Inside: Individual 3-phase fuses for each motor, individual 3-phase power terminals with grounding lugs, control transformer fused on both primary and secondary, control circuit fusing

Suction valve  
Discharge increaser and check valve  
Discharge valve



**Sterling New Berlin**  
2900 S 160th Street  
New Berlin, WI 53151 USA  
Tel: +1 262 641 8610  
Fax: +1 262 641 8653  
www.sterlco.com

**Sterling Schaumburg**  
1100 E Woodfield Rd #550  
Schaumburg, IL 60173 USA  
Tel: +1 847 273 7700  
Fax: +1 847 273 7804

**Sterling India**  
Gat No. 191/1, Sandbhor Complex,  
Mhalunge, Chakan, Tal Khed,  
Dist. Pune 410501, India  
Tel: +91 21 35329112  
Fax: +91 20 40147576

**Sterling Warsaw**  
ul.Dziakowa 115  
02-234 Warszawa  
Tel: +48 22 390 9720  
Fax: +48 22 390 9724

**Sterling Suzhou**  
109 Xingpu Road SIP  
Suzhou, China 215126  
Tel: +86 512 8717 1919  
Fax: +86 512 8717 1916

