

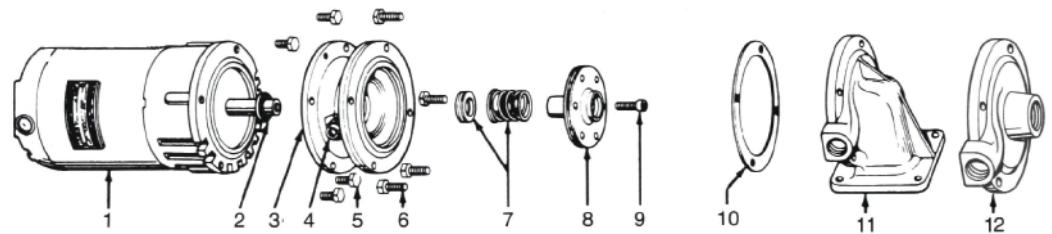


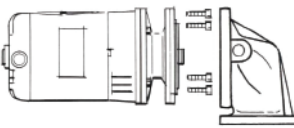
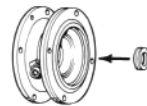

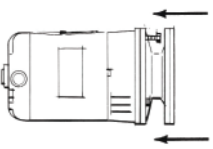
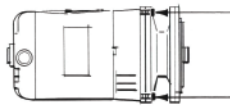
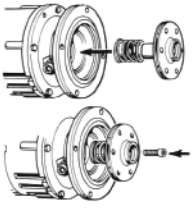

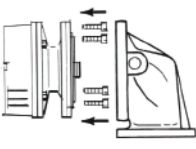
INSTRUCTION SHEET

FOR CHANGEOUT OF SEAL ASSEMBLY

G SERIES CENTRIFUGAL PUMPS

1 Motor	4 Tube fitting	7 Rotary Seal Assembly	10 Housing Gasket
2 Water Slinger	5 Motor Screws (4)	8 Impeller	11 Pump Housing
3 Motor Bracket	6 Pump screws (4)	9 Impeller Screw	12 Threaded Inlet Casting

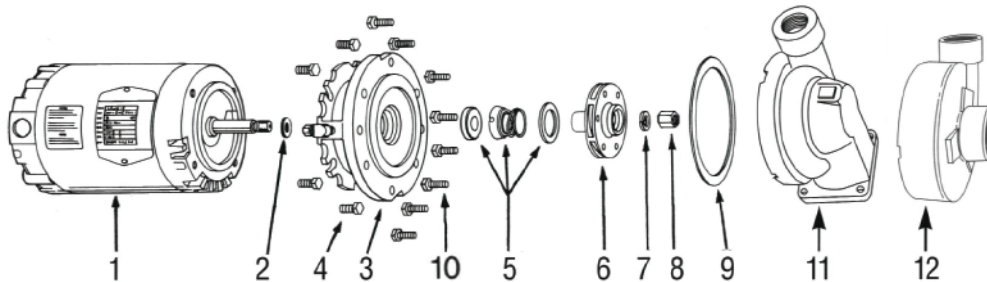


REMOVAL OF OLD SEAL ASSEMBLY	INSTALLATION OF NEW SEAL ASSEMBLY
 <p>A) Remove pump housing from motor bracket and impeller assembly by removing pump screws.</p>	 <p>F) Coat outside edge of new seat with seal lubricant and slip it into the bracket. Press into bracket with thumbs or wooden dowel. Handle seat carefully so seating surfaces are not scratched or chipped...be sure it is squarely seated.</p>
 <p>B) Remove impeller screw and motor screws. (Note: opposite end of motor shaft is fitted with screwdriver slot to hold shaft securely while impeller screw is being removed).</p>	 <p>G) Remount bracket on motor</p>
 <p>C) Insert two of the pump screws into the two threaded holes in the bracket. Tighten them slowly and evenly to force the impeller and bracket off the shaft. Do not pry the impeller or bracket!</p>	 <p>H) Lubricate impeller hub with seal lubricant. Slip new bellows and spring onto impeller hub. Be sure bellows slides freely on impeller hub.</p> <p>I) Replace impeller on motor shaft and secure with impeller screw. Hold shaft with screwdriver slot while tightening screw.</p>
 <p>D) Remove old seal parts from impeller hub and bracket. Be sure water slinger is in place.</p> <p>E) Clean impeller hub thoroughly...remove all loose particles of dirt, grease, etc. Also clean the recess in the bracket so the new seat will fit perfectly. Remove all particles and dirt on gasket surfaces of the two castings.</p>	 <p>J) Replace pump housing onto bracket, using a new housing gasket. Secure with pump screws. Be certain gasket is seated properly.</p>

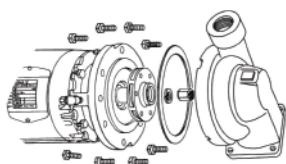


J SERIES CENTRIFUGAL PUMPS

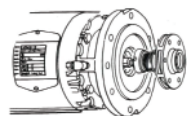
- | | | | |
|-----------------|------------------------|------------------|-----------------------------|
| 1 Motor | 4 Motor Screws (4) | 7 Lock Washer | 10 Pump Screws (8) |
| 2 Water Slinger | 5 Rotary Seal Assembly | 8 Impeller Nut | 11 Vertical Inlet Casting |
| 3 Bracket | 6 Impeller | 9 Housing Gasket | 12 Horizontal Inlet Casting |



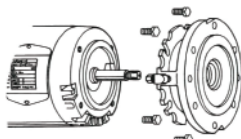
REMOVAL OF OLD SEAL ASSEMBLY



A) Remove 8 pump screws and lift out pump and motor, remove drip cover. Insert large screwdriver into slot at end of motor shaft; hold shaft steady and remove impeller nut and washer from nose of impeller by turning counter clockwise.



B) While still holding motor shaft steady with screwdriver, use 1" socket to remove impeller by turning counterclockwise.

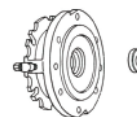


C) Remove the 4 motor screws and separate the bracket from the motor

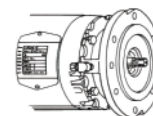


D) Remove old seal parts from impeller hub and bracket. Be sure water slinger is in place. Clean the recess in the bracket so that the new seat will fit perfectly and make a watertight joint. If bracket is badly eroded at recess, through severe use, casting should be replaced. Clean all gasket surfaces. Clean impeller hub thoroughly; remove loose particles of dirt, etc. Use fine emery cloth if necessary. Check prime tube or seal flush line and clean as required.

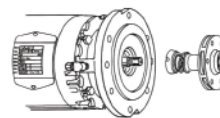
INSTALLATION OF NEW SEAL ASSEMBLY



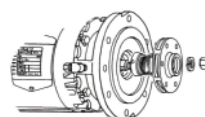
E) Coat outside edge of new seat with seal lubricant and slip it into the bracket. Press into bracket with thumbs or wooden dowel. Handle seat carefully so seating surfaces are not scratched or chipped...be sure it is squarely seated.



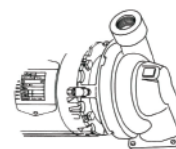
F) Remount bracket on motor



G) Lubricate impeller hub with seal lubricant. Slip new bellows and spring onto impeller hub. Be sure bellows slides freely on impeller hub.



H) Thread impeller on motor shaft extension and secure with washer and impeller nut. Hold shaft with screwdriver slot while tightening.



I) Replace motor assembly onto volute; using new housing gasket. Secure with pump screws. Be certain gasket is seated properly.



2900 S 160th Street
 New Berlin, Wisconsin 53151
 Tel. 262.641.3808 Toll Free 888.777.4085 Fax 262.641.8625
 ©2007 Sterling www.steamcontrolproducts.com

STERLCO® PRODUCTS INCLUDE: HAND RADIATOR VALVES • THERMOSTATIC TRAPS • FLOAT AND THERMOSTATIC TRAPS • INVERTED BUCKET TRAPS • CAST IRON STRAINERS • BRASS STRAINERS • TANK AND PROCESS TEMPERATURE CONTROL VALVES • BOILER FEED UNITS • CONDENSATE PUMPS