



PUMP TANKS

ADVANCED TECHNOLOGY FOR ENHANCED PERFORMANCE

The Polymer Series Pump Tanks feature centrifugal close-coupled pumps and cast iron impellers with 230/ or 460/3/60 ODP motor (other voltages and motor designs are available).

Features

- Centrifugal close-coupled pump, featuring cast iron impellers with 230/ or 460/3/60 ODP motor; other voltages and motor designs are available
- Galvanized pump skid
- Pumps mounted underneath tank
- For C models, tanks come standard with insulation
- Lug-mount butterfly valves
- Automatic level control makeup valve
- White Polyethylene tank construction
- Galvanized tank stand
- Standard hardware includes thermometer(s), pump pressure gauge(s), drain valve
- Full-size pump trim for maximum efficiency; includes valve handles, isolation, throttling, and check valves
- Standard sizes from 500 to 2100 gallon in single and twin tank designs are available



POLYMER SERIES

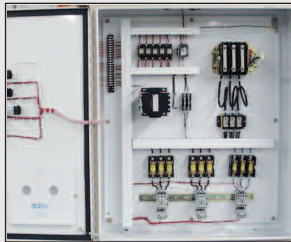


Dimensions and Specifications for Single Well Pump Tanks

Model	Capacity, gallons (max)			Max. Cooling, tons		Max. Pumps Per Ledge	Dimensions, in.			Weight, lbs.	
	Overflow	Operate-T	Operate-C	Tower-T	Chiller-C		Height	Width	Depth	Shipping	Operating
500	500	360	420	90	175	2	135	50	50	450	4615
1100	1100	900	990	206	411		115	90	90	885	10,050
1500	1550	1345	1480	310	617		130	90	90	920	13,900
2100	2100	1685	1850	382	771		150	90	90	1005	18,500

Dimensions and Specifications for TwinTank Pump Tanks

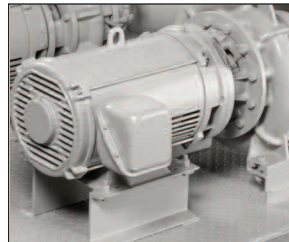
Model	Capacity, gallons (max)			Max. Cooling, tons		Max. Pumps Per Ledge	Dimensions, in.			Weight, lbs.	
	Overflow	Operate-T	Operate-C	Tower-T	Chiller-C		Height	Width	Depth	Shipping	Operating
500D	500	360	420	45	87	2	150	110	50	850	5010
1100D	1000	900	990	103	206		135	200	90	900	9250
1500D	1500	1345	1480	155	309		135	200	90	1000	13,500
2100D	2200	1685	1850	191	386		135	200	90	1770	20,100



Control options are expertly pre-wired to reduce field labor



Single or twin models available



Up to 2 pumps per deck
Standby pumps are available to accommodate future expansion



Standard systems from 90 through 400 tons are available with fiberglass towers, polymer towers, or towers with hot dipped galvanized metal casings



Sterling New Berlin
2900 S 160th Street
New Berlin, WI 53151 USA
Tel: +1 262 641 8610
Fax: +1 262 641 8653
www.sterlco.com

Sterling Schaumburg
1100 E Woodfield Rd #550
Schaumburg, IL 60173 USA
Tel: +1 847 273 7700
Fax: +1 847 273 7804

Sterling Warsaw
ul.Dziakowa 115
02-234 Warszawa
Tel: +48 22 390 9720
Fax: +48 22 390 9724

Sterling India
Gat No. 191/1, Sandbhor Complex,
Mhalunge, Chakan, Tal Khed,
Dist. Pune 410501, India
Tel: +91 21 35329112
Fax: +91 20 40147576

Sterling Suzhou
109 Xingpu Road SIP
Suzhou, China 215126
Tel: +86 512 8717 1919
Fax: +86 512 8717 1916

