



DUPLEX PUMP

CONTROL PANEL

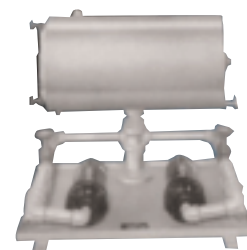
LOWER COST AND FEWER COMPONENTS FOR YOUR BOILER FEED AND CONDENSATE PUMPS

Steam Control Products' new motor control panel offers a reduced size for use in smaller areas, with fewer components to replace and a 25% lower cost than comparable NEMA-rated control panels. The panel uses a Motor Circuit Protector (MCP) which supplies the same functions as fuses, starter and overload protection all in one unit, eliminating the need for six different components. The MCP meets all codes for inspection for both United States and European customers. The panel can also be remote-mounted to save on valuable space.



FEATURES

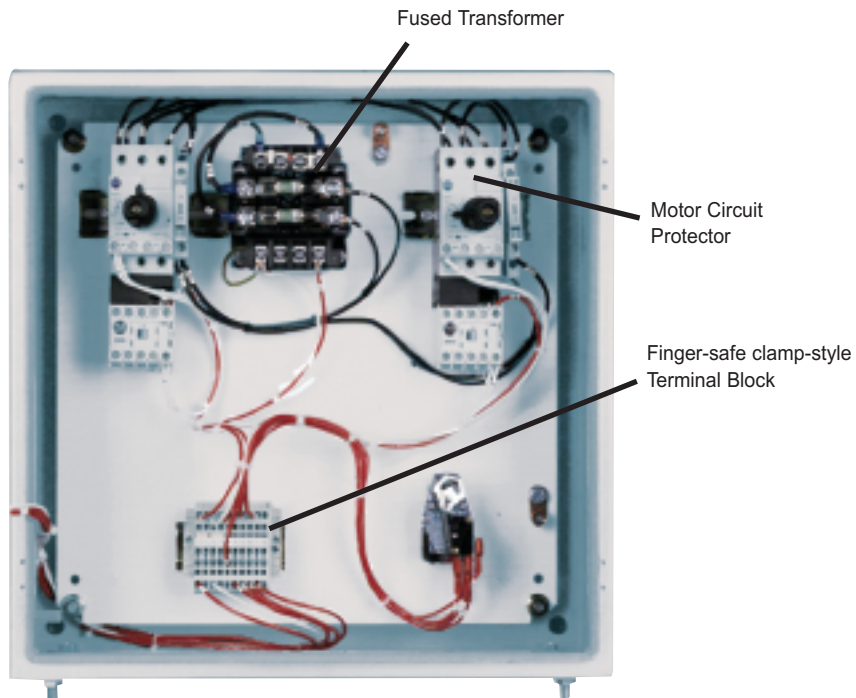
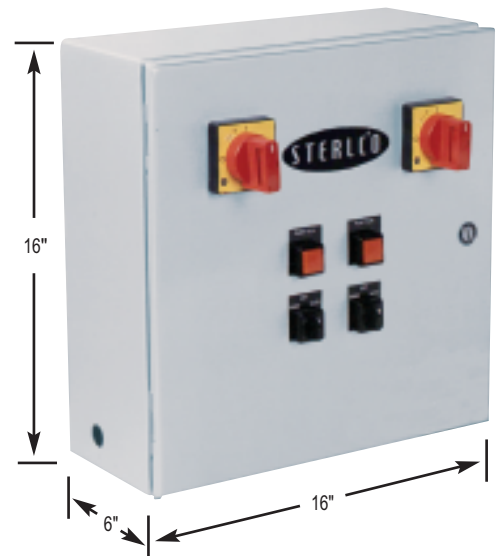
- Motor Circuit Protector (MCP)
- HOA Selector Switch
- External Reset
- Control Circuit Transformer
- Pilot Light (Pump Running)
- Removable Mounting Plate and Terminal Strip in a Single NEMA 12 Enclosure
- Mounted and Wired with Single-Point Connection



SPECIFICATIONS

OPTIONS

- UL Certification
- Pilot Light
- Test Push Button
- Electric Alternator
- Low Water Cutoff
- Boiler Selector Switch
- High-Level Alarm Horn and Light with Silencing Switch
- Low-Level Alarm Horn and Light with Silencing Switch
- Remote Mounting Deduction
- Simplex, Triplex, Quadruplex Pumps



2900 S 160th Street

New Berlin, Wisconsin 53151

Tel. 262.641.3808

Toll Free 888.777.4085

Fax 262.641.8625

© 2007 Sterling

www.steamcontrolproducts.com

STERLCO® PRODUCTS INCLUDE: HAND RADIATOR VALVES • THERMOSTATIC TRAPS • FLOAT AND THERMOSTATIC TRAPS • INVERTED BUCKET TRAPS • CAST IRON STRAINERS • BRASS STRAINERS • TANK AND PROCESS TEMPERATURE CONTROL VALVES • BOILER FEED UNITS • CONDENSATE PUMPS