

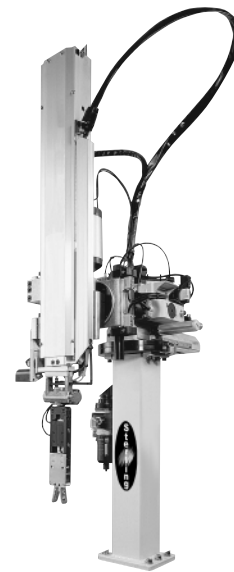
# APEX ST SERIES



Sprue Pickers

## ECONOMICAL AND EFFICIENT IN A LIGHT-WEIGHT PACKAGE

The ST Series Sprue Pickers have high performance, speed and flexibility in one exceptionally reliable package. The compact lightweight design permits quick, easy installation. Oilless pneumatic drive system is virtually maintenance free, increasing reliability.



### Features

- Performance, speed and flexibility in your choice of two exceptionally reliable packages
- Compact, lightweight design permits quick, easy installation
- Oilless pneumatic drive system is virtually maintenance-free, increasing reliability
- Programmable microprocessor controller includes an easy-to-operate, hand-held pendant
- B-90° wrist rotate for proper placement of sprue

### Options

- The compact lightweight telescopic vertical arm (standard on SR-ST 750-950 models)
- Vertical motions ride on linear bearings which allow for lower profiles with increased speed and rigidity
- Venturi vacuum circuit with verification and adjustable vacuum tool
- Slowdown at part release (standard on telescoping 'T' units)
- Mold spray system with controller (excludes nozzles)
- Swing out home position for rack molds
- Non-SPI version
- Spanish version controller
- Tool-free adjustments

# APEX ST SERIES

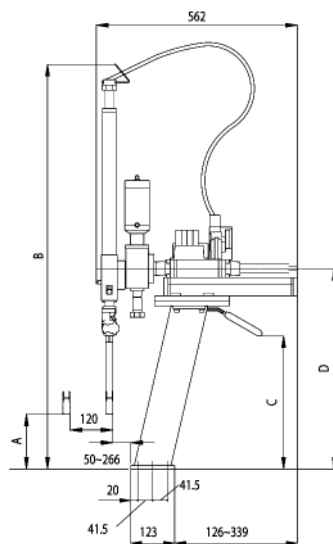
Sprue Pickers

## SPECIFICATIONS

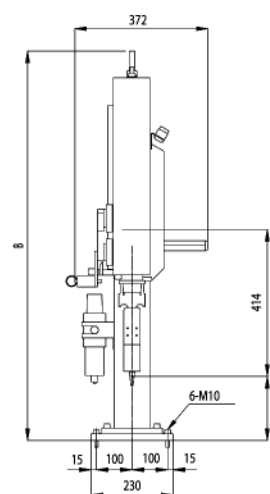
Model	Vertical Stroke (mm/in)	IMM Range (tons)	Dry Cycle (sec)		Net Weight (kg)
			Take-Out	Overall	
ST-550	550/21.7	60-150	0.7	3.7	40
ST-550T			0.5	3.5	49
ST-650	650/25.6	125-250	1.2	4.2	44
ST-650T			0.6	3.6	53
ST-750T	750/29.5	200-350	0.8	3.8	55
ST-850T	850/33.5	300-450	1.0	4.0	57
ST-950T	950/37.4	400-700	1.2	4.2	59

T: Telescopic

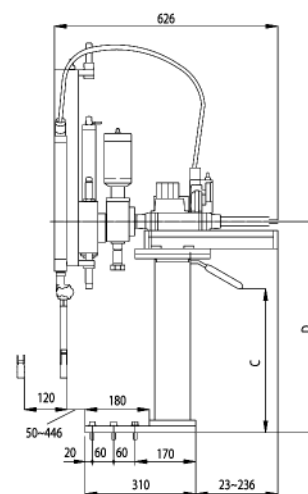
Model	Gripper Height (mm/in)	Overall Height (mm/in)	Handle Height (mm/in)	Swing Centerline (mm/in)
	A	B	C	D
ST-550	180/7.1	1236/48.7	373/14.7	563/22.2
ST-550T		1094/43.1	403/15.9	594/23.4
ST-650	230/9.1	1393/54.8	423/16.7	613/24.1
ST-650T		1194/47	453/17.8	644/25.4
ST-750T	280/11	1294/50.9	503/19.8	694/27.3
ST-850T	330/13	1394/54.9	553/21.8	744/29.3
ST-950T	380/15	1494/58.8	603/23.7	794/31.3



ST-550/650



ST-XXXT



# APEX YS SERIES

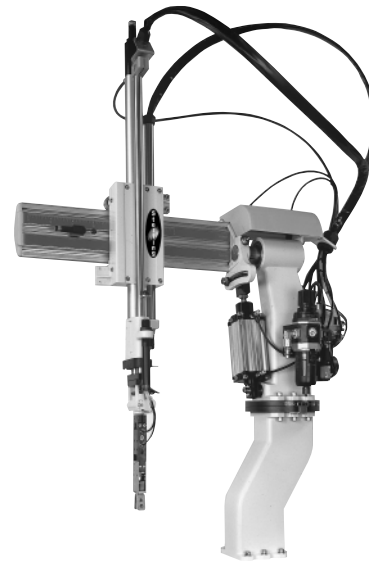


Sprue Pickers

## ECONOMICAL AND EFFICIENT IN A COMPACT DESIGN

The Sterling YS Series pickers feature high payload capacities, a proven design and a state-of-the-art control system. These pickers are backed by Sterling's worldwide network of technical, sales and service support personnel, including experienced design and application engineers.

YS Series sprue pickers from Sterling are designed to be a cost-effective sprue removal robot and feature a single stage vertical arm for simple operation. The standard controller provides teach-programmable sequences for maximum flexibility.



### Features

- Performance, speed and flexibility in your choice of two exceptionally reliable packages
- Compact, lightweight design permits quick, easy installation
- Oilless pneumatic drive system is virtually maintenance-free, increasing reliability
- Programmable microprocessor controller includes an easy-to-operate, hand-held pendant

### Options

- Vertical motions ride on linear bearings which allow for lower profiles with increased speed and rigidity
- Venturi vacuum circuit with verification and adjustable vacuum tool
- B-90° wrist rotate
- Mold spray system with controller (excludes nozzles)
- Swing out home position for rack molds
- Non-SPI version
- Spanish version controller
- Tool-free adjustments

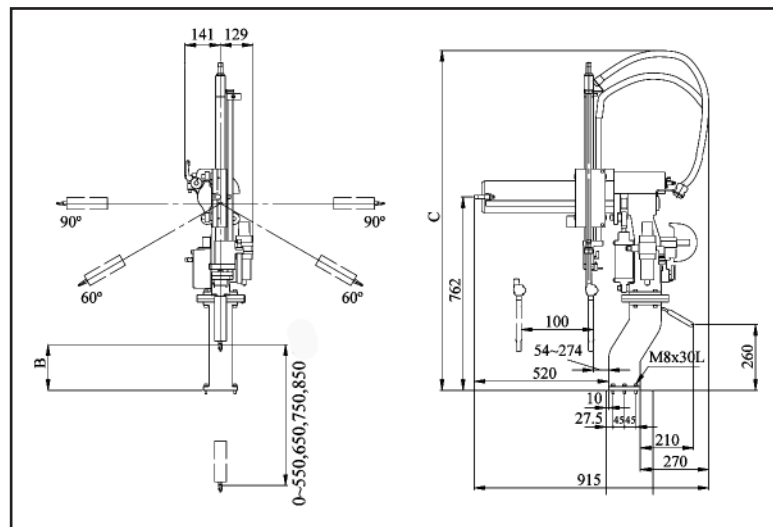
# APEX YS SERIES

Sprue Pickers

## SPECIFICATIONS

Model	Vertical Stroke (mm/in)	IMM Range (tons)	Dry Cycle (sec)		Gripper Heights (mm/in) (B)	Overall Height (mm/in) (C)	Net Weight (kg)
			Take-Out	Overall			
YS-550	550/21.7	60-180	0.7	3.2	115-315/4.5-12.4	1188-1388/ 46.8-54.6	33.5
YS-550W					35-235/1.8-9.3		34
YS-650	650/25.6	120-250	0.8	3.4	115-315/4.5-12.4	1288-1488/ 50.7-58.6	34
YS-650W					35-235/1.8-9.3		34.5
YS-750	750/29.5	200-350	1.0	3.8	75-275/3.0-10.8	1388-1588/ 54.6-62.5	34.5
YS-750W					0.0-190/0.0-7.5		35
YS-850	850/33.5	300-450	1.2	4.0	75-275/3.0-10.8	1488-1688/ 58.6-66.5	35
YS-850W					0.0-190/0.0-7.5		35.5

W: Wrist Rotation



YS-XXX