



## CLEAN ROOM GRANULATOR

### COMPACT DESIGN. MAXIMUM PERFORMANCE.

Sterling's clean room granulator is the answer for high quality regrind in sprue, runner, and small part applications. Good Manufacturing Process (GMP) and medical molding require the elimination of dust in the manufacturing environment. Our 6500 Series Clean Room granulator is designed to meet clean room standards. The dual pneumatic flap in-feed and dust enclosure prevent dust and particles from escaping the granulator.

#### Features

- Special dual flap in-feed ensures complete containment of dust and particles
- Clam shell dust enclosure provides quick and easy, no tools access
- 3-blade open rotor with rotary side walls
- Solid dowel and bolted construction
- Locking swivel casters mounted on base provides mobility
- 5 hp TEFC motor (230 volts or 460 volts/3 phase/60 Hz)
- Control voltage wired with electrical/mechanical safety interlock (115 volts/1 phase/60 Hz)

#### Options

- Ultra low for sprue picker and conveyor fed under-the-press applications
- Hopper extensions for high-drop robot applications
- High base equipped with larger vacuum bin and valve sack discharge
- Wear resistant chamber parts: hardened bed knife blocks, Astrolloy® end discs and bed knife clamps, and electrolyzed screens
- 3-knife, wedge held, open, slant cut rotor with optional non-adjustable or adjustable knives
- Full sound enclosure package

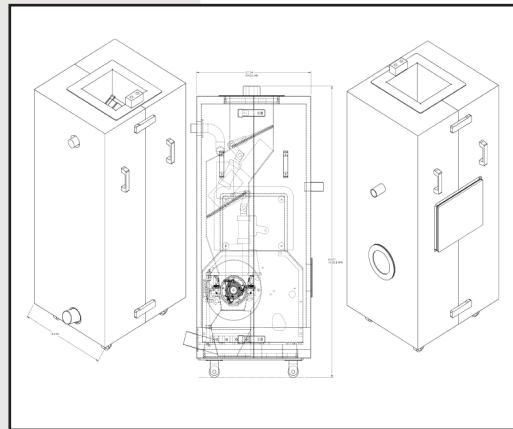
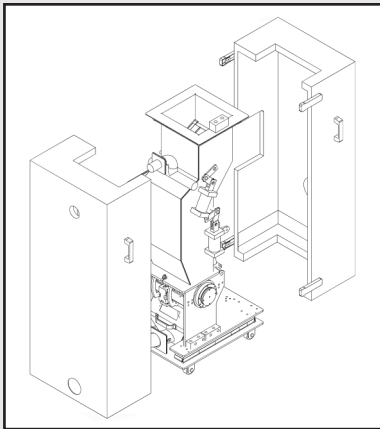


# 6.5 SERIES



Model	6512CR	6516CR
Standard Configuration		
Machine Size (WxLxH), in. (mm)	26 x 30 x 62 (660 x 762 x 1575)	28.5 x 27.5 x 51.2 (724 x 699 x 1300)
Rotor Type	3-blade open with rotating end discs	
Rotor/Cutting Circle Dia., in. (mm)	6.3 (160)	6.3 (160)
Rotor Speed, rpm	210	210
Rotor Knives	3 steep angle	
Bed Knives	2	
Cutting Chamber Opening (HxW), in. (mm)	6.5 x 12 (165 x 305)	6.5 x 16 (165 x 406)
Feed Height, in. (mm)	64 (1626)	64 (1626)
Controls, volts (3 phase/60Hz) <sup>1</sup>	NEMA 12 control enclosure 230 or 460	
Drive Motor HP - Rotor, hp (kW)	5 (3.7)	
Drive parts - Rotor	V-belts	
Infeed	Top feed dual pneumatic flaps	
Screen Size, in (mm) Choice of 1/4, 5/16, 3/8, 1/2, or 5/8	1 piece reversible screen	
Estimated Throughput, lbs/hr (kg/hr)	150 (68)	200 (91)
Discharge Type	Vacuum bin with 1.5" or 2" vacuum probe	
Weight, lbs (kg)	1050 (476)	1130 (513)

<sup>1</sup> Machine is equipped with electrically operated solenoid for dual flaps on hopper (24V or 120V). Customer is responsible for all signals and control equipment to operate and cycle the solenoids / pneumatic flaps.



**Sterling New Berlin**  
 2900 S 160th Street  
 New Berlin, WI 53151 USA  
 Tel: +1 262 641 8610  
 Fax: +1 262 641 8653  
 www.sterlco.com

**Sterling Schaumburg**  
 1100 E Woodfield Rd #550  
 Schaumburg, IL 60173 USA  
 Tel: +1 847 273 7700  
 Fax: +1 847 273 7804

**Sterling Warsaw**  
 ul.Dziakowa 115  
 02-234 Warszawa  
 Tel: +48 22 390 9720  
 Fax: +48 22 390 9724

**Sterling India**  
 Gat No. 191/1, Sandbhor Complex,  
 Mhalunge, Chakan, Tal Khed,  
 Dist. Pune 410501, India  
 Tel: +91 21 35329112  
 Fax: +91 20 40147576

**Sterling Suzhou**  
 109 Xingpu Road SIP  
 Suzhou, China 215126  
 Tel: +86 512 8717 1919  
 Fax: +86 512 8717 1916

