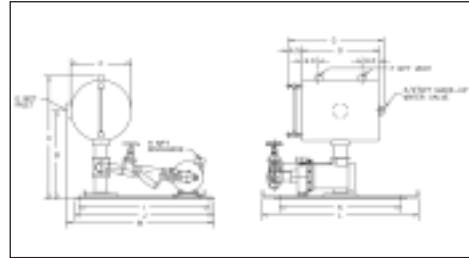


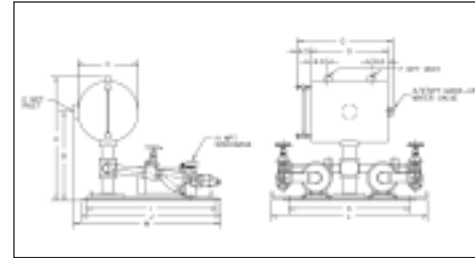


BOILER FEED UNITS 3500 SERIES STEEL TANK

SIMPLEX

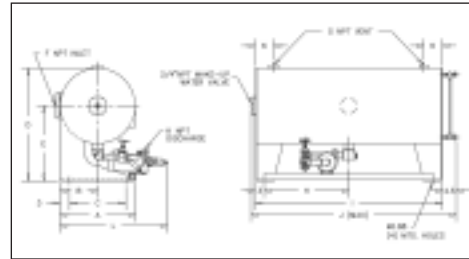


DUPLEX

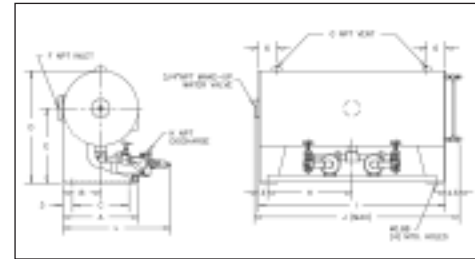


Gallon	A	B	C	D	E	F	G	H		I	J	K	L	M
								G Pump	J Pump					
33	32.5	22.5	18	30	4	1	36.5	.75	1.5	30	32	28	36	36
49	34.5	23.5	20	36	5	1.25	42.5	.75	1.5	30	32	28	36	37
65	34.5	23.5	20	48	5	1.5	54.5	.75	1.5	30	32	28	36	37
95	38.5	25.5	24	48	6	1.5	54.5	.75	1.5	30	32	28	36	39

SIMPLEX



DUPLEX



Gallon	A	B	C	D	E	F	G	H	I	J	K		L
											G Pump	J Pump	
117	24	12	18	36	24	6	2	27	60	67	.75	1.5	36
146	27	13.5	21	39	25.5	6	2	27	60	67	.75	1.5	39
175	30	15	24	42	27	6	2	27	60	67	.75	1.5	42
210	32	16	26	44	28	6	2	27	60	67	.75	1.5	44
264	36	18	30	48	30	6	2	27	60	67	.75	1.5	48
326	40	20	34	52	32	6	2	27	60	67	.75	1.5	52
395	40	20	34	52	32	6	2	33	72	79	.75	1.5	52
470	48	24	42	60	36	6	2	27	60	67	.75	1.5	60
564	48	24	42	60	36	6	2	33	72	79	.75	1.5	60
595	54	27	48	66	39	6	2	27	60	67	.75	1.5	66
714	54	27	48	66	39	6	2	33	72	79	.75	1.5	66

ENERGY EFFICIENT DESIGN, PROVEN PERFORMANCE AND THE RIGHT SIZE FOR YOUR APPLICATION

Sterlco® Boiler Feed Pumps set new standards of performance. Reliable and efficient, each unit features heavy gauge, 3/16" steel receivers for long operating life. In addition, 3450 RPM motors assure maximum efficiency while maintaining minimum motor horsepower. Available in a wide range of sizes, these U.S. made pumps have just the right accessories and options to meet your unique needs. What's more, a nationwide network of stocking distributors means fast, easy, year-round access to pumps and replacement parts.



Shown with Optional Control Panel, Solenoid Operated Make-Up Water Valve, Steam Preheat Tube and 150 Series Temperature Control Valve

FEATURES

- Heavy gauge steel receivers
- Simplex or duplex construction
- Bronze fitted centrifugal pumps
- Energy efficient 3450 RPM motors
- "Sterl-Seal" ceramic pump seal
- Heavy-duty make-up water valve
- Isolation valves and strainers
- Gauge glass



2900 S 160th Street
New Berlin, Wisconsin 53151
Tel. 262.641.3808 Toll Free 888.777.4085 Fax 262.641.8625
©2007 Sterling www.steamcontrolproducts.com

STERLCO® PRODUCTS INCLUDE: HAND RADIATOR VALVES • THERMOSTATIC TRAPS • FLOAT AND THERMOSTATIC TRAPS • INVERTED BUCKET TRAPS • CAST IRON STRAINERS • BRASS STRAINERS • TANK AND PROCESS TEMPERATURE CONTROL VALVES • BOILER FEED UNITS • CONDENSATE PUMPS





Shown with Optional Control Panel, Solenoid Operated Make-Up Water Valve, Steam Preheat Tube and 150 Series Temperature Control Valve



Built-In Features For Precise, Dependable Performance

- *Receiver: Minimum 3/16" heavy steel construction. Receivers through 95 gallon size are center supported, while receivers of 117 gallon up through 714 gallon size are end supported.*
- *Motors: Heavy-duty, ballbearing, close-coupled pump motors with stainless steel shaft. 3450 RPM for greater efficiency and more economical operation.*
- *Make-up Water Valve: Mechanical valve with stainless steel float. These are plug mounted for center supported tanks and flange mounted for end supported tanks. Rated up to 45 PSI inlet water pressure. At pressures exceeding 45 PSI, a PRV is required on the inlet cold water line.*
- *Operation: Boiler feed pump(s) are controlled by a water level controller mounted on the boiler. If condensate is lost or delayed in the system, it is automatically replaced in the receiver through the make-up water valve.*
- *"SteriSeal" Pump Seal (A): Features the ultimate in ceramic technology for exceptionally long life. Because the seal runs on the bronze impeller hub, the motor shaft is literally outside the pump. Consequently, the shaft is not exposed to corrosion by condensate. Rated for temperatures up to 250°F.*
- *Centrifugal Pump: Offers a wide range of pressures and GPM. Unique design features provide for ease of servicing.*



Complete NEMA 12 Control Panel (Optional)

Motor Circuit Protector, HOA Selector Switch, External Reset, Control Circuit Transformer, Pilot Light (pump running), Removable Mounting Plate and Terminal Strip in a Single NEMA 12 Enclosure, Mounted and Wired, with Single Point Power Connection.

Special Options

- Stainless steel receivers
- Electric alternator for duplex units
- Thermometer
- Solenoid operated make-up water valve with reverse acting float switch
- McDonnell-Miller #21 make-up water valve
- Special motor construction, such as totally enclosed and explosion proof, is available
- Complete NEMA 12 control panel
- 1750 RPM motors, larger pumping capacities and higher discharge pressures - consult factory

3500 Series Engineering and Capacity Data

BOILER HP	DISCHARGE PRESSURE PSI	PUMP CAP. GPM.	SIMPLEX		DUPLEX		MOTOR HP	REC. CAP. GAL.
			MODEL NO.	APPROX. SHIP WT.	MODEL NO.	APPROX. SHIP WT.		
15	20	3	35215-GF	265	35215-GDF	325	1/2	33
	30		35315-JF	285	35315-JDF	365	1/2	
	40		35415-JF	290	35415-JDF	375	1	
	50		35515-JF	310	35515-JDF	415	2	
30	20	6	35230-GF	265	35230-GDF	325	1/2	33
	30		35330-JF	285	35330-JDF	365	1/2	
	40		35430-JF	290	35430-JDF	375	1	
	50		35530-JF	310	35530-JDF	415	2	
45	20	9	35245-GF	350	35245-GDF	410	1/2	49
	30		35345-JF	370	35345-JDF	450	1/2	
	40		35445-JF	375	35445-JDF	460	1	
	50		35545-JF	395	35545-JDF	500	2	
60	20	12	35260-GF	390	35260-GDF	450	1/2	65
	30		35360-JF	410	35360-JDF	490	1/2	
	40		35460-JF	415	35460-JDF	500	1	
	50		35560-JF	435	35560-JDF	540	2	
75	20	15	35275-GF	440	35275-GDF	500	1/2	95
	30		35375-JF	460	35375-JDF	540	3/4	
	40		35475-JF	465	35475-JDF	550	1	
	50		35575-JF	485	35575-JDF	590	2	
100	20	20	352100-GF	615	352100-GDF	675	1/2	95
	30		353100-JF	635	353100-JDF	715	3/4	
	40		354100-JF	645	354100-JDF	735	1 1/2	
	50		355100-JF	660	355100-JDF	765	2	
150	20	30	352150-GF	720	352150-GDF	790	3/4	146
	30		353150-JF	740	353150-JDF	830	1	
	40		354150-JF	750	354150-JDF	850	1 1/2	
	50		355150-JF	770	355150-JDF	890	3	
200	20	40	352200-JF	930	352200-JDF	1020	1	210
	30		353200-JF	935	353200-JDF	1030	1 1/2	
	40		354200-JF	940	354200-JDF	1040	2	
	50		355200-JF	960	355200-JDF	1080	3	
250	20	50	352250-JF	990	352250-JDF	1085	1	264
	30		353250-JF	995	353250-JDF	1095	1 1/2	
	40		354250-JF	1010	354250-JDF	1125	2	
	50		355250-JF	1015	355250-JDF	1135	3	
300	20	60	352300-JF	1075	352300-JDF	1175	1 1/2	326
	30		353300-JF	1090	353300-JDF	1205	2	
	40		354300-JF	1090	354300-JDF	1205	2	
	50		355300-JF	1145	355300-JDF	1315	5	
400	20	80	352400-JF	1170	352400-JDF	1285	2	395
	30		353400-JF	1175	353400-JDF	1295	3	
	40		354400-JF	1175	354400-JDF	1295	3	
	50		355400-JF	1225	355400-JDF	1395	5	
500	20	100	352500-JF	1335	352500-JDF	1450	2	470
	30		353500-JF	1340	353500-JDF	1460	3	
	40		354500-JF	1340	354500-JDF	1460	3	
	50		355500-JF	1390	355500-JDF	1560	5	
600	20	120	352600-JF	1440	352600-JDF	1555	2	595
	30		353600-JF	1445	353600-JDF	1565	3	
	40		354600-JF	1495	354600-JDF	1665	5	
	50		355600-JF	1495	355600-JDF	1665	5	
700	20	140	352700-JF	1555	352700-JDF	1675	3	714
	30		353700-JF	1605	353700-JDF	1775	5	
	40		354700-JF	1605	354700-JDF	1775	5	
	50		355700-JF	1615	355700-JDF	1795	7 1/2	

Sample Specification

Furnish and install, where indicated on plans, a Sterling 3500 Series (simplex, duplex, triplex....) boiler feed unit(s). Each pump shall deliver _____ GPM at a discharge pressure of _____ PSI. The unit(s) shall be factory assembled and tested by the pump manufacturer and shall include a receiver, pump(s), make-up water valve, gauge glass, isolation valve(s) and strainer(s) on the pump suction and accessories.

The receiver shall have a capacity of _____ gallons and be of minimum 3/16" steel construction. Pump(s) shall be of the centrifugal type with two-piece enclosed brass impeller, cast iron housing, high temperature (250°F) mechanical seal and stainless steel motor shaft. The make-up water valve is to be a mechanical type with a stainless steel float. The motor(s) shall be horizontal, 3450 RPM, _____ phase, _____ volt, 60 cycle, _____ H.P.